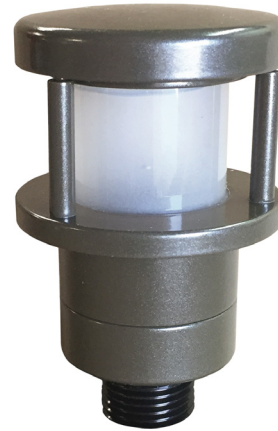


| | |
|------------------|--|
| Model | PL-21 |
| Lamp: | T4 Halogen (order separately) |
| Maximum Wattage: | 35 watt, 4 watt LED (order separately) |
| Input Voltage: | 12V (remote transformer required) |
| Material: | Machined Aluminum or Brass |
| Hardware: | Stainless Steel |
| Finishes: | Seven Polyester Powder Coat, two Brass |
| Lens: | Tempered Frosted or Clear Glass |
| Mounting: | 1/2" NPS (order mount separately) |
| Stem Length: | 3", 6", 9", 12", 18" |
| Socket: | GY 6.35 Bi-Pin Porcelain |
| IP Rating: | 66 |
| Certification: | Wet location landscape, UL1838 |
| Wiring: | 6 ft. 18/2 low voltage cable |
| Weight: | Aluminum: 1.5 lbs. Brass: 6.5 lbs. |
| Warranty: | Aluminum: 10 Years Brass: 25 Years |
| Dimensions: | 2 1/8" dia. top, 1" dia. stem |



Shown in Bronze Powder Coat Finish (BZ)

Brass



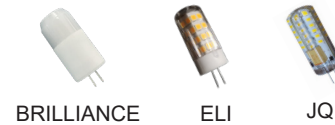
METALS:

6061-T6 Aluminum

30333 Brass



Lamp Options:



ORDERING LOGIC:

| | | |
|--------------|---|--|
| Model: | PL - 21 | |
| Metal: | A - Aluminum | B - Brass |
| Lens Style: | F - Frosted | C - Clear |
| Top: | S - Standard D - Dome | T - Tall C - Cone |
| Stem Length: | 0 - None 3 - 3" 6 - 6" | 9 - 9" 12 - 12" 18 - 18" |
| Finish: | BK - Black BZ - Bronze WT - White BG - Beige NT - Natural | BKT - Black Texture BZT - Bronze Texture SL - Silver AC - Aged Copper DB - Dark Bronze |

Shade Top Styles



Mounting Stake Options:



ORDERING EXAMPLE: PL - 21 - A - F - S - 6 - BK