

| | |
|----------------|---|
| Model | ST-40L |
| Lamp: | 2W LED - 145 lumens |
| Input Voltage: | 9-13VAC/DC* or 100-120VAC *(remote transformer required) |
| Material: | Cast Aluminum |
| Hardware: | Stainless Steel |
| Finishes: | Four Finishes |
| Mounting: | Junction Box - Single Gang (optional) |
| IP Rating: | 65 |
| Certification: | Wet location |
| Wiring: | 4" - 18/2 Cable |
| Weight: | .4 lbs. |
| Warranty: | 3 years |
| Dimensions: | 3 1/4" H x 5 1/4" W |



Shown in Brushed Nickel Finish (BN)

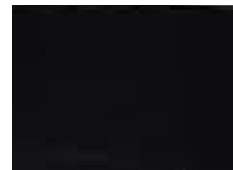


METALS:

Cast Aluminum



Finishes:



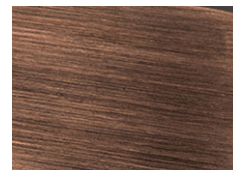
Black (BK)



White (WT)



Brushed Nickel (BN)



Dark Bronze (DB)

ORDERING LOGIC:

| | | |
|---------------|--------------------------|---|
| Model: | ST - 40L | |
| Metal: | A - Aluminum | |
| Voltage: | 1 - 9-13VAC/DC | 2 - 100-120VAC |
| Color: | 27 - 2700K 40 - 4000K | 30 - 3000K |
| Junction Box: | 1 - With Jbox | 2 - Without Jbox |
| Finish: | BK - Black WT - White | BN - Brushed Nickel DB - Dark Bronze |

ORDERING EXAMPLE: ST - 40L - A - 1 - 27 - 1 - BK