

|                  |                                   |
|------------------|-----------------------------------|
| Model            | FA-24                             |
| Lamp:            | MR16 Halogen or LED               |
| Maximum Wattage: | 50 watt, 8 watt LED               |
| Input Voltage:   | 120V                              |
| Material:        | Machined Aluminum                 |
| Hardware:        | Stainless Steel                   |
| Finishes:        | Seven Polyester Powder Coat       |
| Knuckle:         | Tapered & Positive Locking        |
| Lens:            | Tempered Clear Glass              |
| Cap Accessories: | Holds two accessories (optional)  |
| Mounting:        | 1/2" NPS (order mount separately) |
| Socket:          | GU 10 Porcelain                   |
| IP Rating:       | 66                                |
| Certification:   | Wet location                      |
| Wiring:          | 10" 18 ga Teflon Coated           |
| Weight:          | 2.1 lbs.                          |
| Warranty:        | 10 Years                          |
| Dimensions:      | 3" dia. x 6" overall              |



Shown in Bronze Powder Coat Finish (BZ)



SORAA



BRILLIANCE



**METALS:**

6061-T6 Aluminum



Mounting Options:

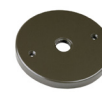
MT-4

MT-16

MT-24

MT-25

MT-26



**ORDERING LOGIC:**

Model: FA - 24

Metal: A - Aluminum

Finish: BK - Black      BKT - Black Texture  
 BZ - Bronze      BZT - Bronze Texture  
 WT - White      SL - Silver  
 BG - Beige      AC - Aged Copper



**ANODIZING PROTECTION:**

To increase the corrosion resistance in our products, we use a three-step process:

1. Machine 6061-T6 copper-free aluminum.
2. Anodized pre-treatment applied.
3. Polyester powder coat finish applied.

**ORDERING EXAMPLE:** FA - 24 - A - BK