

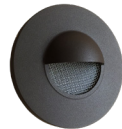
Model	ST-14L
Lamp:	LED Module: 2W - 9W Adjustable
Wattage:	12W Startup draw
Input Voltage:	10.8-13.2VAC/DC (remote transformer required)
Material:	Machined Aluminum or Brass
Hardware:	Stainless Steel
Finishes:	Seven Polyester Powder Coat, 2 Brass
Lens:	Tempered Crystalline Spread
Styles:	1/2 or 3/4 eyelid
Mounting:	Core Drill 2 1/2" dia.
IP Rating:	67
Certification:	Wet location landscape, UL2108
Wiring:	6' - 16/2 Low Voltage Cable
Weight:	Aluminum: 3.0 lbs.
Warranty:	Aluminum: 10 Years, Brass: 25 Years
Dimensions:	5" dia. faceplate, 6" overall length



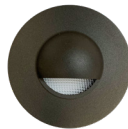
Shown in Bronze Powder Coat Finish (BZ)



2W/4W/6W/9W



1/2 Eyelid



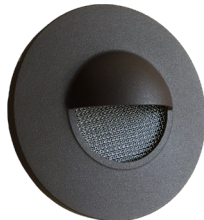
3/4 Eyelid



**METALS:**

6061-T6 Aluminum

Brass



**CORE DRILL DESIGN:**

Core Drill design for stone, brick or concrete installations. Core size of 2 1/2" is required. Six feet of low voltage cable with strain relief is supplied.

**ORDERING LOGIC:**

Model: ST - 14L

Metal: A - Aluminum      B - Brass

Style: 1 - 1/2 Eyelid  
2 - 3/4 Eyelid

Finish: BK - Black      BKT - Black Texture  
BZ - Bronze      BZT - Bronze Texture  
WT - White      SL - Silver  
BG - Beige      AC - Aged Copper  
NT - Natural      DB - Dark Bronze

**ORDERING EXAMPLE:** ST - 14L - A - 1 - BK - 55\*

\*See Module sheet to select module type to be installed

**ANODIZING PROTECTION:**

To increase the corrosion resistance in our products, we use a three-step process:

1. Machine 6061-T6 copper-free aluminum.
2. Anodized pre-treatment applied.
3. Polyester powder coat finish applied.



**SEALED WIRE PASS-THRU SYSTEM:**

Our molded, high-temperature silicone wire pass-thru system is installed into every product to prevent water intrusion. Water will not leak into the lamp compartment. The socket is replaceable because it is not glued in.



9W MULTI-LEVEL - 2W, 4W, 6W, 9W (165-860 Lumens)



- Equivalent to MR16 20W/35W/50W/75W Halogen (equivalent CBCP)
- Four light levels, 2700K, 3000K, or 4000K
- 10.8-13.2V AC/DC
- 12W startup draw
- Interchangeable lenses: 15°, 30°, 45°, 60°
- Superior Light Output and thermal performance compared to LED Replacement Lamps
- Compatible with low-voltage magnetic transformers
- L70=60,000 hours
- 3 Year warranty
- FCC Compliant
- RoHS Compliant
- Pb Free
- Field Replaceable



#	Specifications	Lumens
50	2W - 9W, 2700K, 15°	165-720
51	2W - 9W, 2700K, 30°	165-720
52	2W - 9W, 2700K, 45°	165-720
60	2W - 9W, 2700K, 60°	165-720
53	2W - 9W, 3000K, 15°	190-800
54	2W - 9W, 3000K, 30°	190-800
55	2W - 9W, 3000K, 45°	190-800
61	2W - 9W, 3000K, 60°	190-800
62	2W - 9W, 4000K, 15°	210-860
63	2W - 9W, 4000K, 30°	210-860
64	2W - 9W, 4000K, 45°	210-860
65	2W - 9W, 4000K, 60°	210-860

Wattage	2700k	3000K	4000K
2W	165 lms	190 lms	210 lms
4W	345 lms.	360 lms.	385 lms
6W	515 lms.	530 lms.	590 lms
9W	720 lms.	800 lms.	860 lms

**LENSES INCLUDED**

15°



45°



30°



60°

