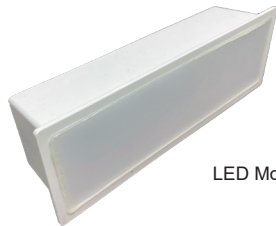


Model	ST-51L
Lamp:	5W LED - 350 lumens
Input Voltage:	100-277VAC
Material:	Cast Aluminum
Hardware:	Stainless Steel
Finishes:	Five Finishes
Mounting:	Recessed junction box design
IP Rating:	65
Certification:	Wet location
Wiring:	4" - 18/2 Cable
Weight:	.4 lbs.
Warranty:	3 years
Dimensions:	3 1/4" H x 8 1/2" W



Shown in Black Finish (BK)



LED Module

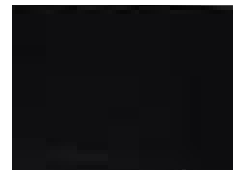


**METALS:**

Cast Aluminum



**Finishes:**



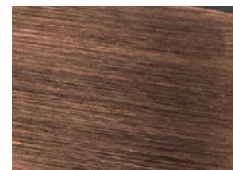
Black (BK)



White (WT)



Brushed Nickel (BN)



Dark Bronze (DB)

**ORDERING LOGIC:**

Model: ST - 51L

Voltage: 100 - 100-277VAC

Color: 27 - 2700K      30 - 3000K  
40 - 4000K

Finish: BK - Black      BN - Brushed Nickel  
BR - Brown      DB - Dark Bronze  
WT - White

**ORDERING EXAMPLE:** ST - 51L - 100 - 27 - BK