

Model	ST-9L
Lamp:	2W LED - 160 lumens, 4W - 320 lumens
Input Voltage:	12VDC (remote magnetic transformer required)
Material:	Machined Aluminum or Brass
Hardware:	Stainless Steel
Finishes:	Seven Polyester Powder Coat, 2 Brass
Lens:	Clear
Mounting:	4/0 Double-deep Junction Box
IP Rating:	66
Certification:	Wet location landscape, UL2108
Wiring:	12" 18 ga. Teflon Coated Leads
Weight:	Aluminum: 2.0 lbs.
Warranty:	Aluminum: 10 Years, Brass: 25 Years
Dimensions:	5" x 5" x 3/8" thick (faceplate)



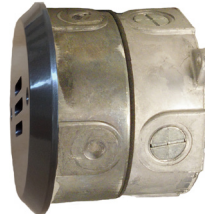
Shown in Bronze Powder Coat Finish (BZ)



METALS:

6061-T6 Aluminum

Brass



JUNCTION BOX DESIGN:

Double-deep, 4/0 Junction box provides for wiring and lamping compartment. Cast aluminum junction box can be shipped separately for concrete pour installations, if required.

ORDERING LOGIC:

Model:	ST - 9L	
Metal:	A - Aluminum	B - Brass
Wattage:	2 - 2 Watt	4 - 4 Watt
Kelvin:	27 - 2700K 40 - 4000K	30 - 3000K
Finish:	BK - Black BZ - Bronze WT - White BG - Beige NT - Natural	BKT - Black Texture BZT - Bronze Texture SL - Silver AC - Aged Copper DB - Dark Brass



REPLACEABLE LED MODULE:

Our waterproof LED module is available in 2W and 4W versions. It is field replaceable. Available in three Kelvin choices: 2700K, 3000K and 4000K.

ORDERING EXAMPLE: ST - 9L - A - 2 - 27 - BK