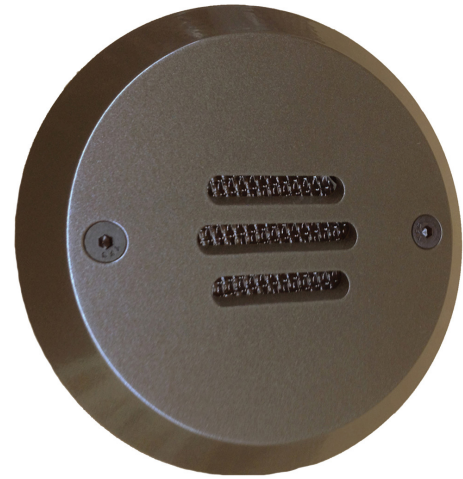


Model	ST-10
Lamp:	MR16 Halogen or LED
Maximum Wattage:	20 watt, 8 watt LED
Input Voltage:	12V (remote transformer required)
Material:	Machined Aluminum or Brass
Hardware:	Stainless Steel
Finishes:	Seven Polyester Powder Coat, 2 Brass
Lens:	Tempered Crystalline Spread
Mounting:	4/0 Double-deep Junction Box
Socket:	GY-6.35 Bi Pin Porcelain
IP Rating:	66
Certification:	Wet location landscape, UL2108
Wiring:	12" 18 ga. Teflon Coated Leads
Weight:	Aluminum: 3.0 lbs.
Warranty:	Aluminum: 10 Years, Brass: 25 Years
Dimensions:	5 1/2 " diameter x 3/8" thick



Shown in Bronze Powder Coat Finish (BZ)



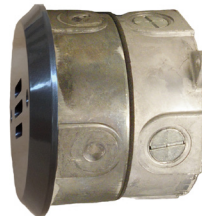
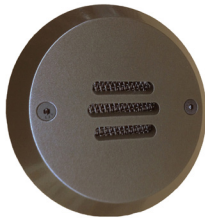
SORAA DAUER BRILLIANCE



METALS:

6061-T6 Aluminum

Brass



JUNCTION BOX DESIGN:

Double-deep, 4/0 Junction box provides for wiring and lamping compartment. Cast aluminum junction box can be shipped separately for concrete pour installations, if required.

ORDERING LOGIC:

Model: ST - 10

Metal: A - Aluminum B - Brass

Finish: BK - Black BKT - Black Texture
 BZ - Bronze BZT - Bronze Texture
 WT - White SL - Silver
 BG - Beige AC - Aged Copper
 NT - Natural DB - Dark Brass



ANODIZING PROTECTION:

To increase the corrosion resistance in our products, we use a three-step process:

1. Machine 6061-T6 copper-free aluminum.
2. Anodized pre-treatment applied.
3. Polyester powder coat finish applied.

ORDERING EXAMPLE: ST - 10 - A - BK