

Model	PL-27
Lamp:	MR16 Halogen or LED
Maximum Wattage:	50 watt, 9 watt LED
Input Voltage:	120V
Material:	Machined Aluminum
Hardware:	Stainless Steel
Finishes:	Seven Polyester Powder Coat
Lens:	Tempered Clear Glass
Cap:	Three cap styles available
Mounting:	PVC Mounting Stake Included
Stem Length:	12", 18", 24", 30", 36", 42", 48"
Socket:	GU 10
IP Rating:	66
Certification:	Wet location
Wiring:	6 ft. 18/2 low voltage cable
Weight:	2.4 lbs.
Warranty:	10 Years
Dimensions:	3" dia. x 6 1/4" long



Shown in Bronze Powder Coat Finish (BZ)



SORAA



BRILLIANCE



**METALS:**

6061-T6 Aluminum



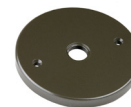
Other Mount Options:

Standard

MT-25

MT-28

MT-44



**ORDERING LOGIC:**

Model: PL - 27

Metal: A - Aluminum

Cap: 1 - Flush  
2 - Regress  
3 - 45 Degree

Mountings: 1 - Conduit Stake(Incl) 2 - MT-25  
3 - MT-28 4 - MT-44

Stem Length: 12 - 12" 36 - 36"  
18 - 18" 42 - 42"  
24 - 24" 48 - 48"  
30 - 30"

Finish: BK - Black BKT - Black Texture  
BZ - Bronze BZT - Bronze Texture  
WT - White SL - Silver  
BG - Beige AC - Aged Copper

**ANODIZING PROTECTION:**

To increase the corrosion resistance in our products, we use a three-step process:

1. Machine 6061-T6 copper-free aluminum.
2. Anodized pre-treatment applied.
3. Polyester powder coat finish applied.



**ORDERING EXAMPLE:** PL - 27 - A - 1 - 1 - 24 - BK