

Model	ST-41L
Lamp:	2W LED - 145 lumens
Input Voltage:	9-13VAC/DC* or 100-120VAC *(remote transformer required)
Material:	Cast Aluminum
Hardware:	Stainless Steel
Finishes:	Four Finishes
Mounting:	Junction Box - Single Gang (optional)
IP Rating:	65
Certification:	Wet location
Wiring:	4" - 18/2 Cable
Weight:	.4 lbs.
Warranty:	3 years
Dimensions:	5 1/4" H x 3 1/4" W



Shown in Brushed Nickel Finish (BN)



**METALS:**

Cast Aluminum



**Finishes:**



Black (BK)



Brushed Nickel (BN)

**ORDERING LOGIC:**

Model:	ST - 41L	
Metal:	A - Aluminum	
Voltage:	1 - 9-13VAC/DC	2 - 100-120VAC

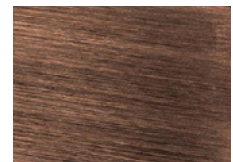
Color:	27 - 2700K	30 - 3000K
	40 - 4000K	

Junction Box:	1 - With Jbox	2 - Without Jbox
---------------	---------------	------------------

Finish:	BK - Black	BN - Brushed Nickel
	WT - White	DB - Dark Bronze



White (WT)



Dark Brown (DB)



**REPLACEABLE LED MODULE:**

Our waterproof LED module is available in 2W. It is field replaceable. Available in three Kelvin choices: 2700k, 3000k and 4000k.

**ORDERING EXAMPLE:** ST - 41L - A - 1 - 27 - 1 - BK