

Model	WA-33L
Lamp:	2W -12W Adjustable
Maximum Wattage:	15W Startup Draw
Input Voltage:	12VAC/DC (remote magnetic transformer required)
Kelvin:	2700K, 3000K. CRI = 85
Material:	Machined Aluminum
Hardware:	Stainless Steel
Finishes:	Seven Polyester Powder Coat
Lens:	Tempered Clear Glass, Flush lens
Cap Accessories:	Holds two accessories (optional)
Mounting:	Three plate options
Socket:	GY 6.35 Bi-Pin Porcelain
IP Rating:	66
Certification:	Wet location
Wiring:	10" 18 ga Teflon Coated
Weight:	3.0 lbs.
Warranty:	10 Years
Dimensions:	3" dia. x 9 5/8" overall



Shown in Bronze Powder Coat Finish (BZ)



2W/4W/6W/9W/12W

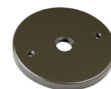


METALS:

6061-T6 Aluminum



Mounting Plate Options:



4/0 Round



4/0 Square



3/0 Round

ORDERING LOGIC:

Model:	WA - 33L	
Metal:	A - Aluminum	
Mounting Plate:	1 - 4/0 Round 3 - 3/0 Round	2 - 4/0 Square
Finish:	BK - Black BZ - Bronze WT - White BG - Beige	BKT - Black Texture BZT - Bronze Texture SL - Silver AC - Aged Copper

ORDERING EXAMPLE: WA - 33L - A - 1 - BK - 52*

*See Module sheet to select module type to be installed

ANODIZING PROTECTION:

To increase the corrosion resistance in our products, we use a three-step process:

1. Machine 6061-T6 copper-free aluminum.
2. Anodized pre-treatment applied.
3. Polyester powder coat finish applied.



SEALED WIRE PASS-THRU SYSTEM:

Our molded, high-temperature silicone wire pass-thru system is installed into every product to prevent water intrusion. Water will not leak into the lamp compartment when used for downlighting in trees. The socket is replaceable because it is not glued in.

12W MULTI-LEVEL - 2W, 4W, 6W, 9W, 12W (210-1165 Lumens)



- True equivalent to MR16 20W/35W/50W Halogen (equivalent CBCP)
- 2700K or 3000K
- Equivalent to either 50W, 35W or 20W halogen light output levels
- 12VAC/DC
- G5.3 bi-pin base
- 15W startup draw
- Interchangeable lenses: 15°, 30°, 45°, 60°
- Superior Light Output and thermal performance compared to LED Replacement Lamps
- Compatible with low-voltage magnetic transformers
- L70=60,000 hours
- 3 Year warranty
- FCC Compliant
- RoHS Compliant
- Pb Free
- Field replaceable

#	Specifications	Lumens
50	2W - 12W, 2700K, 15°	210-960
51	2W - 12W, 2700K, 30°	210-960
52	2W - 12W, 2700K, 45°	210-960
60	2W - 12W, 2700K, 60°	210-960
53	2W - 12W, 3000K, 15°	230-1165
54	2W - 12W, 3000K, 30°	230-1165
55	2W - 12W, 3000K, 45°	230-1165
61	2W - 12W, 3000K, 60°	230-1165

Wattage	2700K	3000K
2W	210 lms.	230 lms.
4W	340 lms.	385 lms.
6W	580 lms.	670 lms.
9W	820 lms.	915 lms.
12W	960 lms.	1165 lms.



15° / 30° / 45° / 60°

Beam angle easily changed through replacing lens.

15°



45°



30°



60°

