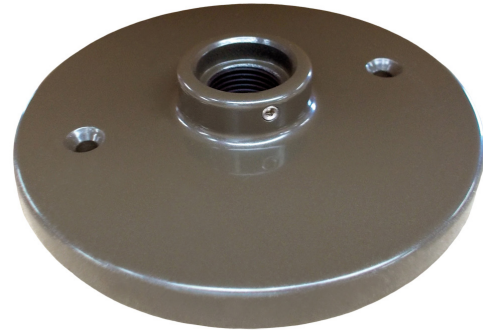


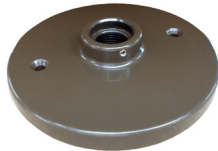
Model	MT-41
Material:	Machined Aluminum
Fixture Mount:	1/2" NPS
Finishes:	7 Polyester Powder Coat
Weight:	.4 lbs.
Warranty:	10 Years
Dimensions:	4" dia. x 1" thick



Shown in Bronze Powder Coat Finish (BZ)

**METALS:**

6061-T6 Aluminum



**DESIGN FEATURE:**

10-32 set screw provides positive locking after rotational aiming is completed.



Recommended installation is to locate the locking set screw above luminaire to provide a 'clean' look.



**ORDERING LOGIC:**

Model: MT - 41

Metal: A - Aluminum

Finish: BK - Black      BKT - Black Texture  
 BZ - Bronze      BZT - Bronze Texture  
 WT - White      SL - Silver  
 BG - Beige      AC - Aged Copper

**ORDERING EXAMPLE:** MT - 41 - A - WT