

Model	MT-25
Material:	Machined Aluminum
Fixture Mount:	1/2" NPS for Single Mount 7/8" Slip Hole for Dual Mount
Finishes:	7 Polyester Powder Coat
Styles:	Single or Dual Mount
Weight:	.5 lbs.
Warranty:	10 Years
Dimensions:	5" dia. x 3/16" thick



Shown in Bronze Powder Coat Finish (BZ)

ACCESSORIES



AY - 4



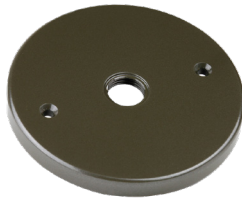
AY - 8



AY - 13

METALS:

6061-T6 Aluminum



Design Choices:

There are two styles from which to choose. They are designed to mount on standard 4/0 round junction box with universal mounting ring and stainless steel hardware included. Dual version has slip fit holes for ease of installation and adjustment of luminaires.



ORDERING LOGIC:

Model:	MT - 25	
Metal:	A - Aluminum	
Style:	S - Single Hole D - Dual Hole	
Finish:	BK - Black BZ - Bronze WT - White BG - Beige	BKT - Black Texture BZT - Bronze Texture SL - Silver AC - Aged Copper

ORDERING EXAMPLE: MT - 25 - A - S - WT